

# MIS BIOMATERIALS

Product Catalog



## TABLE OF CONTENTS

### P. 8 - 25

P. 8 - 9

P. 10 - 11

P. 12 - 13

P. 14 - 15

P. 16 - 17

P. 18 - 19

P. 20 - 21

P. 22 - 23

P. 24 - 25

### P. 26 - 27

P. 26 - 27

### P. 28 - 35

P. 28 - 29

P. 30 - 31

P. 32 - 33

P. 34 - 35

### P. 36 - 39

P. 36 - 37

P. 38 - 39

### P. 40 - 47

---

## Bone Grafting

---

4MATRIX

---

BONDBONE®

---

OSSIX® BONE

---

4BONE™ BCH - Synthetic Bone Substitute

---

4BONE™ XBM - Anorganic Bovine Bone Matrix

---

Allograft Particulate

---

MATRIX CELLECT® 100 DBM Putty and Crunch

---

Matrix OI® Cortical Fibers

---

ConCelltrate® 100

---

## Bone and Tissue Scaffold

---

OSSIX® VOLUMAX

---

## Barrier Membranes

---

OSSIX® PLUS

---

MATRIX OI® FlexIt

---

4BONE™ RSB - Resorbable Collagen Barrier Membrane

---

4BONE™ RCB - Resorbable Conforming Barrier Membrane

---

## Soft Tissue Regeneration

---

MATRIX IQ® Dermis

---

4BONE™ PLUG & 4BONE™ TAPE - Collagen Wound Dressings

---

## Additional Information



## OVERVIEW

Established in 1995, MIS Implants Technologies Ltd. is at the forefront of development and production of advanced products and solutions aimed to simplify implant dentistry. With our cutting-edge facilities, MIS offers a complete range of premium quality dental implants, superstructures, tools and kits, regenerative solutions and digital dentistry. Distributed in over 65 countries, MIS provides unparalleled service to our customers. MIS is deeply committed to our core values of quality, service, agility and innovation, integrity and caring; reflected in every step of our work process and supported by over 300 dedicated MIS employees. Standing behind MIS are world-class scientists and engineers, devoted to the continued research and development of innovative products and technologies, perfectly matched to the needs of dental implant professionals worldwide.





mis



## REGENERATIVE SOLUTIONS

Flexibility is the key benefit of the expansive MIS regenerative portfolio. MIS offers a full array of proven and cost effective solutions to address every regenerative indication. Make regeneration simple with MIS.



### BONE GRAFTING - SYNTHETIC AND XENOGRAFT

---

4MATRIX  
BONDBONE®  
OSSIX® BONE  
4BONE™ BCH  
4BONE™ XBM



### BONE GRAFTING - ALLOGRAFT

---

CellRight Allograft Particulate  
Matrix Collect® Putty  
Matrix IO Cortical Fibers  
ConCelltrate® 100 Carrier



## BONE AND TISSUE SCAFFOLD

---

OSSIX® VOLUMAX



## BARRIER MEMBRANES

---

OSSIX® PLUS  
MATRIX OI® FLEXIT  
4BONE™ RSB  
4BONE™ RCB



## SOFT TISSE REGENERATION

---

MATRIX IQ® Dermis  
4BONE™ PLUG & 4BONE™ TAPE



## Bone Graft Cement

4MATRIX Bone Graft Cement is an innovative synthetic bone grafting product developed to simplify dental bone grafting procedures. Composed of pure biphasic calcium sulfate and hydroxyapatite and characterized by a predetermined setting time, strength, and resorption rate. 4MATRIX is the preferred augmentation product for a wide variety of dental bone grafting procedures.

- Simplified procedure with an “All in One” 1cc sterile syringe
- Exceptional handling properties with 3 minute working time and is not effected by blood or saliva
- Consistent and dependable bone grafting solution



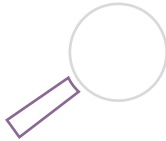
### Material

66.6% Biphasic Calcium Sulfate,  
33.3% Hydroxyapatite, and Saline



### Resorption Time

The Biphasic Calcium sulfate degrades at a rate similar to bone formation (4-10 weeks), while the HA acts as a longer term space maintainer.



### Indications

Sinus floor augmentation, periodontal bone defects, dehiscence; fenestrations, alveolar ridge augmentation, horizontal defect (and crest widening), filling bony defects pre implant placement, and filling of cyst cavities



Buy 3 **Get 1 Free**



BS-4MX10 - 4MATRIX Bone Graft Cement 1cc | \$125



**BONDBONE®**

## Bonding Graft Material

BONDBONE® is a novel synthetic bone grafting material, considered to be a breakthrough in the field of dental bone augmentation.

- Composed of Biphasic Calcium Sulfate – An established and widely documented synthetic graft material
- Biocompatible, osteoconductive and bioresorbable
- Consistent, fast setting and not effected by blood or saliva
- Capable of being mixed with bone-filling products to create a composite graft solution

BONDBONE® Composite\* Mix with a granular bone filler to:

- Prevent particle migration
- Potentially create an osteoconductive and osteoinductive composite

\*BONDBONE Composite should be a blend of:

- 1cc BONDBONE
- 0.5cc Bone Particulate
- 0.75cc Sterile Saline



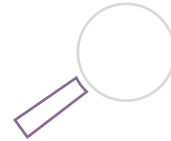
### Material

100% Pure Biphasic  
Calcium Sulfate



### Resorption Time

3 Months (Stand Alone)



### Indications

**Stand Alone:** Four wall extraction sockets, after immediate implant placement, where threads are exposed, periodontal defects, and other small bony defects

**As a Composite:** Extraction sockets with a defect less than 10mm, large buccal wall defects and sinus lifts

Buy 3 **Get 1 Free**

\* Buy 3 Bondbone (0.5 or 1cc), receive 1 free (atleast 2 of the 3 must be 1cc to get 1cc free)



BS-BB005 - BONDBONE 0.5cc Syringe (3-pack) | \$186  
BS-BB010 - BONDBONE 1cc Syringe (3-pack) | \$273



**OSSIX<sup>®</sup>  
BONE**

## Cross-Linked Collagen Bone Forming Sponge

OSSIX™ Bone is a cross-linked, mineralized collagen spongy matrix. This innovative solution is optimized for simple, consistent and highly effective bone regeneration when large amounts of bone volume is needed.

- Utilizing the proven GLYMATRIX® process, ossification has been confirmed in 8-12 months without residual remanence
- May be left exposed and no membrane required when used in socket preservation and closed (crestal approach) sinus elevation
- Capable of creating vertical and lateral bone volume
- Soaks up blood at site quickly for simple implantation and initial hemostasis

 To learn more about the GLYMATRIX® process turn to the additional information on pages 42-45.



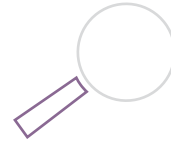
### Material

Cross-Linked Porcine Collagen  
and under 5% micro-granules  
of Hydroxyapatite (HA)



### Remodeling Time

8-12 Months



### Indications

Socket preservation\*, closed (crestal approach) sinus elevation\*, Lateral and Vertical Bone Augmentations

To correct bony defects in implants with peri-implantitis

In Periodontal bony defects around teeth.

\* No membrane required

Buy 6 **Get 1 Free\***

\* Buy 6 of any size and receive 1 of the smallest size selected in that order free of charge



4B-B0125 - OSSIX BONE - 5x5x5mm | \$105  
4B-B0250 - OSSIX BONE - 5x5x10mm | \$155  
4B-B0500 - OSSIX BONE - 5x10x10mm | \$220

A large purple circle containing the text "4BONE™ BCH" in white, bold, sans-serif font.

**4BONE™  
BCH**

## Synthetic Bone Substitute

4BONE™ BCH is a fully synthetic bone graft material made of Hydroxyapatite (HA, 60%) and  $\beta$ -TCP (40%). Its osteoconductive structure, featuring 70% interconnected macro-porosity and micro-porosity, promotes colonization of osteogenic cells and allows the diffusion of biological fluids. Combined with its optimized morphology, 4BONE™ BCH resorption properties enable predictable treatment outcomes.



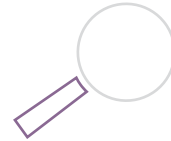
### Material

60% Hydroxyapatite (HA)  
and 40% Beta-Tricalcium  
Phosphate ( $\beta$ -TCP)



### Resorption Time

6-8 Months



### Indications

Sinus and ridge augmentation, socket  
preservation, and bone void filling

Buy 6 **Get 1 Free\***

\* Buy 6 of any size and receive 1 free (mix and match all 4bone products and sizes, free product will match the lowest priced product)



BS-4BS01 - 4Bone Synthetic Bone Substitute .5cc, Syringe | \$69  
BS-4BS1S - 4Bone Synthetic Bone Substitute 1cc, Small Granule Vial | \$99  
BS-4BS25 - 4Bone Synthetic Bone Substitute 2.5cc, Vial | \$199

## 4BONE™ XBM

## Xenograft Bovine Matrix

4BONE™ XBM is produced by the removal of all organic components from bovine bone, leaving the natural mineral component for use as an osteoconductive material to support bone regeneration. Due to its natural structure, 4BONE™ XBM is physically and chemically comparable to the mineralized matrix of human bone. The trabecular architecture with interconnecting macro and micro pores allows for the optimal ingrowth of new vascularity and bone at the graft site and maximizes the potential for angiogenesis.



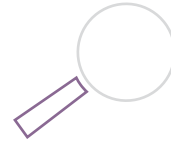
### Material

Anorganic Bovine Bone  
Mineral Matrix



### Resorption Time

4-6 Months



### Indications

Ridge augmentations, filling of infrabony periodontal defects, filling of extraction sockets, elevating extraction sockets, elevating the maxillary sinus floor, and filling of peri-implant defects



Buy 6 **Get 1 Free\***

\* Buy 6 of any size and receive 1 free (mix and match all 4bone products and sizes, free product will match the lowest priced product)



4B-X2505 - XBM Xenograft 0.25-1mm granules, 0.5cc | \$73  
4B-X2510 - XBM Xenograft 0.25-1mm granules, 1cc | \$117  
4B-X2525 - XBM Xenograft 0.25-1mm granules, 2.5cc | \$225  
4B-X2540 - XBM Xenograft 0.25-1mm granules, 4cc | \$319



## CellRight

# Mineralized Allograft Particulate Scaffold

A premium allograft particulate processed using proprietary fiber technology from strategic anatomical donor locations. Particulate is available in Cortical, Cancellous, and Cortical/Cancellous.

- Elongated particulate design for maximum surface area; a larger and roughened surface area helps influence osteoinduction and osteoconduction
- Elongated particulate produces optimal handling properties for a putty-like consistency
- BioRinse™ proprietary cleansing process consists of rinsing agents in multiple combinations designed to kill pathogenic microorganisms, vegetative bacteria, and spores. These steps include the removal of debris, blood, bone marrow and lipids, and components associated with disease transmission.
- 5-year shelf life
- Medical device sterility assurance level (SAL) of  $10^{-6}$



### Material

100% Human Derived Bone



### Remodeling Time

4-6 Months



### Indications

Sinus and ridge augmentation, socket preservation, and bone void filling.

Buy 6 Get 1 Free\*

\* Buy 6 of any size and receive 1 free (mix and match all CellRight products and sizes, free product will match the lowest priced product)



422202 - Mineralized 60 Cortical/ 40 Cancellous 0.25-1 mm Partic. Size, 0.25cc | \$37  
422205 - Mineralized 60 Cortical/ 40 Cancellous 0.25-1 mm Partic. Size, 0.5cc | \$65  
422210 - Mineralized 60 Cortical/ 40 Cancellous 0.25-1 mm Partic. Size, 1cc | \$87  
422220 - Mineralized 60 Cortical/ 40 Cancellous 0.25-1 mm Partic. Size, 2cc | \$129  
422250 - Mineralized 60 Cortical/ 40 Cancellous 0.25-1 mm Partic. Size, 5cc | \$305  
422305 - Mineralized 60 Cortical/ 40 Cancellous, 1-2mm Partic. Size, 0.5cc | \$70  
422310 - Mineralized 60 Cortical/ 40 Cancellous, 1-2mm Partic. Size, 1.0cc | \$93  
422320 - Mineralized 60 Cortical/ 40 Cancellous, 1-2mm Partic. Size, 2cc | \$145

422002 - Mineralized Cortical 0.25-1mm Partic. Size, 0.25cc | \$35  
422005 - Mineralized Cortical 0.25-1mm Partic. Size, 0.5cc | \$57  
422010 - Mineralized Cortical 0.25-1mm Partic. Size, 1cc | \$78  
422020 - Mineralized Cortical 0.25-1mm Partic. Size, 2cc | \$118  
422050 - Mineralized Cortical 0.25-1mm Partic. Size, 5cc | \$286  
422102 - Mineralized Cancellous 0.25-1mm Partic.e Size, 0.25cc | \$39  
422105 - Mineralized Cancellous 0.25-1mm Partic. Size, 0.5cc | \$66  
422110 - Mineralized Cancellous 0.25-1mm Partic. Size, 1cc | \$78  
422120 - Mineralized Cancellous 0.25-1mm Partic. Size, 2cc | \$134



MATRIX  
COLLECT®

## 100 DBM Putty and Crunch

A premium demineralized bone matrix (DBM) available in two forms - putty or crunch. Both forms do not contain any extrinsic carriers and are derived entirely from 100% allograft bone.

- Great handling properties and resistance to irrigation
- Every lot verified osteoinductive, post-sterilization
  - In-vitro tests demonstrate robust levels of native BMP (bone morphogenic protein) activity
  - In-vivo tests demonstrate the presence of all 5 bone forming elements
- Elongated DBM particulate design for maximum surface area; larger and roughened surface area helps influence osteoinduction and osteoconduction activity
- BioRinse™ proprietary cleansing process consists of rinsing agents in multiple combinations designed to kill pathogenic microorganisms, vegetative bacteria, and spores. These steps include the removal of debris, blood, bone marrow and lipids, and components associated with disease transmission.
- 2-Year shelf life
- Medical device sterility assurance level (SAL) of  $10^{-6}$



To learn more about CellRight's Osteoinductivity testing turn to the additional information section on pages 46-47.



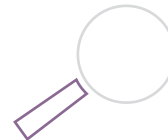
### Material

100% Human Derived Bone



### Remodeling Time

4-6 Months



### Indications

Bone augmentation around implants, sinus & ridge augmentation, extraction socket grafting.

Buy 6 **Get 1 Free\***

\* Buy 6 of any size and receive 1 free (mix and match all CellRight products and sizes, free product will match the lowest priced product)



452010 - MatrixCollect 100 DBM Putty 1.0cc Syringe CR | \$190  
452025 - MatrixCollect 100 DBM Putty 2.5cc Syringe CR | \$420  
455010 - MatrixCollect 100 DBM Crunch 1.0cc Syringe CR | \$220  
455025 - MatrixCollect 100 DBM Crunch 2.5cc Syringe CR | \$440

## MATRIX OI FIBERS CORTICAL

## Demineralized Inductive Carrier Matrix

Matrix OI® Cortical Fibers are a revolutionary demineralized osteoinductive carrier matrix offering the clinician the following benefits:

- Osteoinductive Carrier – Proprietary fiber technology allows the clinician to hydrate the Demineralized Bone Matrix (DBM) Cortical Fibers using saline, blood, Bone Marrow Aspirate (BMA), Platelet Rich Plasma (PRP), and/or other cellular components in accordance with the clinician's well-informed medical judgment.
- Optimized Handling Properties – String-like macro structure and roughened micro surface structure soaks up hydrating agents, rendering the grafting material into a putty-like consistency. These fibers can be packed tightly into bony defects while still leaving room for blood-flow. Matrix OI® Cortical Fibers also offers exceptional handling when mixed with mineralized bone particulate.
- Every lot verified osteoinductive, post-sterilization
  - In-vitro tests demonstrate robust levels of native BMP (bone morphogenic protein) activity
  - In-vivo tests demonstrate the presence of all 5 bone forming elements
- 5-year shelf life
- Medical device sterility assurance level (SAL) of  $10^{-6}$

 To learn more about CellRight's Osteoinductivity testing turn to the additional information section on pages 46-47.



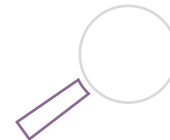
### Material

100% Human Derived Bone



### Remodeling Time

4-6 Months



### Indications

Larger bone defects, multi-root extractions, sinus & ridge augmentation, and periodontal defects

Buy 6 **Get 1 Free\***

\* Buy 6 of any size and receive 1 free (mix and match all CellRight products and sizes, free product will match the lowest priced product)



445010 - Matrix OI Cortical Fibers 1cc | \$250  
445025 - Matrix OI Cortical Fibers 2.5cc | \$500



ConCelltrate®  
100

## Demineralized Inductive Carrier Matrix

ConCelltrate® 100 is a revolutionary demineralized osteoinductive carrier matrix. This unique offering allows the clinician the below benefits:

- Osteoinductive Carrier – Unique design allows the clinician to hydrate the inductive carrier matrix (ICM) using saline, blood, Bone Marrow Aspirate (BMA), Platelet Rich Plasma (PRP), and/or other cellular components in accordance with the clinician's well-informed medical judgment.
- Optimized Handling Properties – Elongated, rice-shaped macro structures and highly roughened micro surface structures soak up hydrating agents for controlled delivery; forms into a solid putty-like consistency for simple implantation and maintains consistency under irrigation and bleeding.
- Verified Osteoinductive
- Every lot of ConCelltrate® 100 is verified osteoinductive post sterilization.
  - In-vitro testing demonstrates robust levels of native BMP (bone morphogenic protein) activity.
  - In-vivo testing demonstrates the presence of all 5 bone forming elements
- 5-year shelf life
- Medical device sterility assurance level (SAL) of  $10^{-6}$



To learn more about CellRight's Osteoinductivity testing turn to the additional information section on pages 46-47.



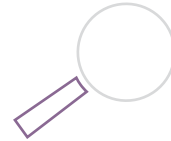
### Material

100% Human Derived Bone



### Remodeling Time

4-6 Months



### Indications

Larger bone defects, multi-root extractions, sinus & ridge augmentation, and periodontal defects



Buy 6 **Get 1 Free\***

\* Buy 6 of any size and receive 1 free (mix and match all CellRight products and sizes, free product will match the lowest priced product)



453010 - ConCelltrate 100 - 1cc | \$250  
453025 - ConCelltrate 100 - 2.5cc | \$500



## OSSIX® VOLUMAX

## Cross-Linked Collagen Scaffold

OSSIX® VOLUMAX is a multi-layer, cross-linked collagen scaffold, featuring GLYMATRIX® technology:

- Undergoes rapid vascularization and ossification
- ~2mm thick and expands when wet
- Excellent handling, easy to use, adapts and adheres to the bone
- Purified and sterilized porcine collagen to ensure safety
- Cross-linked collagen scaffold means ossification, not resorption

### Be Prepared for the Unforeseen

You may encounter bone defects in either 1st or 2nd stage implant procedures. OSSIX® VOLUMAX is suitable for all stages and a broad range of indications.

 To learn more about the GLYMATRIX® process turn to the additional information on pages 42-45.



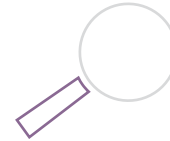
### Material

Cross-Linked Porcine Collagen



### Ossification Time

Begins at 1 Month with Full  
Ossification by 10-12 Months

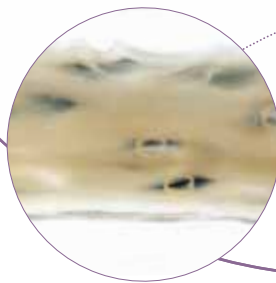
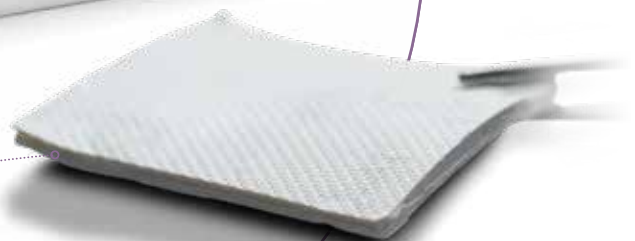


### Indications

OSSIX® VOLUMAX biodegradable collagen scaffold is intended for use during the process of guided bone regeneration (GBR) and guided tissue regeneration (GTR) as a biodegradable scaffold

Buy 6 **Get 1 Free\***

\* Buy 6 of any size and receive 1 of the smallest size selected in that order free of charge



Two dense layers and one central gel-like layer, made entirely of cross-linked collagen for volume and superior handling



- 4B-V1012 - OSSIX VOLUMAX 10x12mm Collagen Scaffold | \$99
- 4B-V1040 - OSSIX VOLUMAX 10x40mm Collagen Scaffold | \$159
- 4B-V1525 - OSSIX VOLUMAX 15x25mm Collagen Scaffold | \$149
- 4B-V2530 - OSSIX VOLUMAX 25x30mm Collagen Scaffold | \$169



**OSSIX<sup>®</sup>  
PLUS**

## Cross-Linked Collagen Membrane

A unique ossifying membrane for Guided Bone Regeneration (GBR) and Guided Tissue Regeneration (GTR).

Utilizing the patented, GLYMATRIX™ process, collagen is cross-linked to create a durable and resilient barrier membrane that doesn't simply resorb, it is proven to maintain a barrier and then ossify (turn to bone) over the course of 4-6 months.

With over 100 peer-reviewed publications demonstrating its effectiveness as an ossifying barrier membrane, Ossix Plus is an optimal xenograft choice for GBR and BTR.

 To learn more about the GLYMATRIX® process turn to the additional information on pages 42-45.



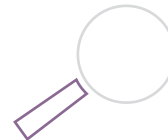
Material

Cross-Linked Porcine Collagen



Ossification Time

4-6 Months



Indications

OSSIX® PLUS biodegradable collagen membrane is intended for use during the process of guided bone regeneration (GBR) and guided tissue regeneration (GTR) as a biodegradable barrier.

Buy 6 **Get 1 Free\***

\*Buy 6 of any size and receive 1 of the smallest size selected in that order free of charge



4B-O1525 - OSSIX PLUS 15X25mm Dental Membrane | \$120  
4B-O2530 - OSSIX PLUS 25X30mm Dental Membrane | \$160  
4B-O3040 - OSSIX PLUS 30X40mm Dental Membrane | \$198




## MATRIX OI® FlexIt

## Flexible Demineralized Cortical Matrix

Matrix OI® FlexIt, when hydrated, is a thin pliable cortical matrix that has the ability to be sutured, tacked, screwed, and sized with scissors or a scalpel.

- Great handling properties and resists irrigation
- Every lot verified osteoinductive, post-sterilization
  - In-vitro tests demonstrate robust levels of native BMP (bone morphogenic protein) activity
  - In-vivo tests demonstrate the presence of all 5 bone forming elements
- Ideal membrane that induces new bone growth through its native BMP (bone morphogenic protein) activity
- BioRinse™ proprietary cleansing process consists of rinsing agents in multiple combinations designed to kill pathogenic microorganisms, vegetative bacteria, and spores. These steps include the removal of debris, blood, bone marrow and lipids, and components associated with disease transmission.
- 5-year shelf life
- Medical device sterility assurance level (SAL) of  $10^{-6}$ .

 To learn more about CellRight's Osteoinductivity testing turn to the additional information section on pages 46-47.



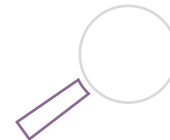
### Material

100% Human Derived Cortical  
Bone



### Remodeling Time

4-6 Months



### Indications

Repair of three wall-defects,  
repair of access windows, ridge  
augmentation, and extraction  
socket with partial buccal wall

Buy 6 **Get 1 Free\***

\* Buy 6 of any size and receive 1 free (mix and match all CellRight products and sizes, free product will match the lowest priced product)



446007 - Matrix OI FlexIt 10x17mm | \$220



**4BONE™  
RSB**

## Resorbable Collagen Barrier Membrane

4BONE™ RSB Resorbable Collagen Barrier Membrane, is a bioresorbable, cell occlusive membrane engineered from highly purified Type I bovine collagen. Due to its optimal initial rigidity and defined stability, 4BONE™ RSB prevents soft tissue ingrowth during healing in defects that lack bony wall support.

- Offers initial rigid stability
- Versatile membrane can be oriented in either direction and used hydrated or dry



### Material

Highly Purified Type I  
Bovine Collagen



### Resorption Time

6-9 Months



### Indications

Extraction sites, periodontal defects,  
sinus augmentation, peri-implant  
defects, and ridge augmentation



Buy 6 **Get 1 Free\***

\*Buy 6 of any size and receive 1 free (mix and match all 4bone products and sizes, free product will match the lowest priced product)



4B-S1520 - RSB Space Maintaining Bovine Collagen Membrane 15x20 | \$96  
4B-S2030 - RSB Space Maintaining Bovine Collagen Membrane 20x30 | \$117  
4B-S3040 - RSB Space Maintaining Bovine Collagen Membrane 30x40 | \$175

## 4BONE™ RCB

## Resorbable Conforming Barrier Membrane

4BONE™ RCB is a versatile resorbable barrier membrane. Upon hydration, the barrier membrane easily adapts and conforms to all surgical sites and supports healing of bone and soft tissue. 4BONE™ RCB can be easily trimmed and does not adhere to itself or instruments when hydrated. The optimal mechanical properties and high tensile strength of 4BONE™ RCB allow for easy placement and adaptability in ridge augmentation procedures due to its ability to naturally conform to the site where it is placed.

- Conforms and adapts to accommodate uneven surfaces and tight surgical spaces
- Versatile membrane can be oriented in either direction and used hydrated or dry



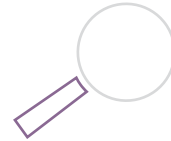
### Material

Highly Purified Type I  
Bovine Collagen



### Resorption Time

3-4 Months



### Indications

Extraction sites, periodontal defects,  
sinus augmentation, peri-implant  
defects, and ridge augmentation

Buy 6 **Get 1 Free\***

\*Buy 6 of any size and receive 1 free (mix and match all 4bone products and sizes, free product will match the lowest priced product)



4B-C1520 - RCB Conforming Bovine Collagen Membrane 15x20 | \$117  
4B-C2030 - RCB Conforming Bovine Collagen Membrane 20x30 | \$144  
4B-C3040 - RCB Conforming Bovine Collagen Membrane 30x40 | \$234



## MATRIX IQ<sup>®</sup> DERMIS

## Dermal Membrane

A revolutionary acellular human dermal membrane that does not require graft orientation. This membrane allows for graft placement using either dermal side. Matrix IQ<sup>®</sup> Dermis is processed to remove cellular components and preserve biological properties that promote revascularization and repair of damaged tissue without inflammation.

- Great handling properties and resistance to irrigation
- Maintains elasticity of human skin and provides natural scaffold
- BioRinse™ proprietary cleansing process consists of rinsing agents in multiple combinations designed to kill pathogenic microorganisms, vegetative bacteria, and spores. These steps include the removal of debris, blood, bone marrow and lipids, and components associated with disease transmission.
- 5-year shelf life
- Medical device sterility assurance level (SAL) of 10<sup>-6</sup>



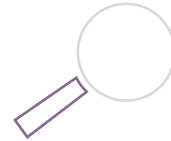
### Material

100% Human  
Decellularized Dermis



### Integration Time

1-2 Weeks



### Indications

Oral wounds, surgical wounds, and extraction sites. Matrix IQ<sup>®</sup> Dermis is designed for the replacement and reinforcement of soft tissue defects.

Buy 6 **Get 1 Free\***

\* Buy 6 of any size and receive 1 free (mix and match all CellRight products and sizes, free product will match the lowest priced product)



#### Thin

- 461001 - Matrix IQ Dermis - 10mm x 10mm x 0.5mm | \$86
- 461002 - Matrix IQ Dermis - 20mm x 10mm x 0.5mm | \$130

#### Thick

- 461011 - Matrix IQ Dermis - 10mm x 10mm x 1mm | \$86
- 461012 - Matrix IQ Dermis - 20mm x 10mm x 1mm | \$130

## 4BONE™ PLUG & 4BONE™ TAPE

### Resorbable Collagen Wound Dressing

4BONE™ PLUG and 4BONE™ TAPE are used following oral surgical procedures to aid in wound healing. They are engineered from highly purified cross-linked Type I bovine collagen with an optimal structure and thickness to allow the absorption of both fluid and blood at the defect site.

4BONE™ PLUG and 4BONE™ TAPE are sterile dental wound dressings engineered from bovine Type I collagen. They protect the oral wound bed and control minor bleeding due to the intrinsic hemostatic properties of intact collagen fibers.



#### Material

Highly Purified Cross-linked  
Type I Bovine Collagen



#### Resorption Time

1-2 Weeks



#### Indications

Oral wounds, surgical wounds,  
extraction sites, provides a matrix for  
wound healing and aids in the repair  
of Schneiderian Membrane

Buy 6 **Get 1 Free\***

\*Buy 6 of any size and receive 1 free (mix and match all 4bone products and sizes, free product will match the lowest priced product)



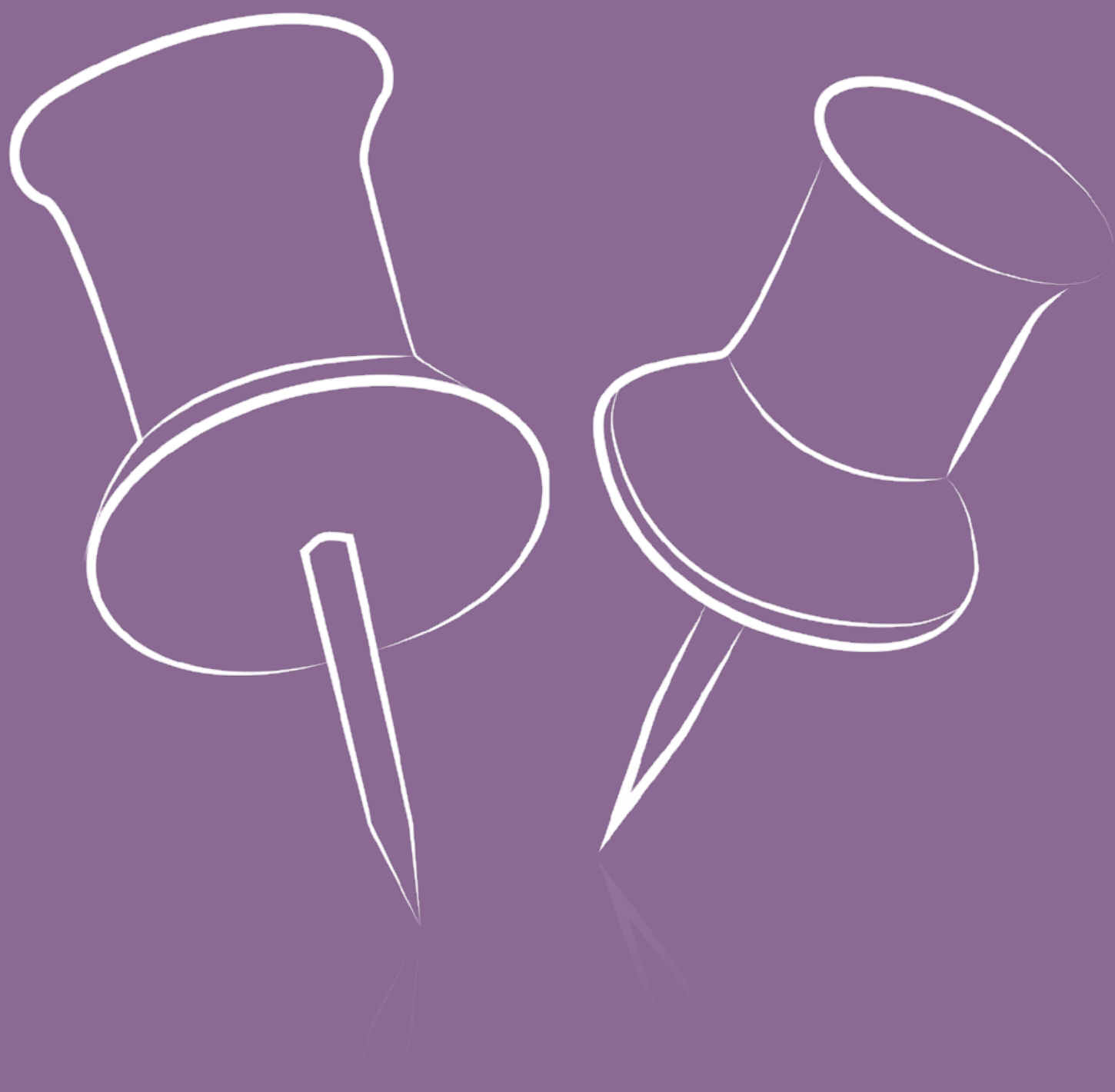
4B-P0010 - Resorbable Collagen PLUG (10 pack) | \$108  
4B-T0010 - Resorbable Collagen TAPE (10 pack) | \$163



## ADDITIONAL INFORMATION

For your convenience, the following section provides an added resource about products and processes that may require expanded explanations in the form of visuals, schematics, technical information or documentation.





## OSSIX® VOLUMAX Ossification and Improved Bone Growth

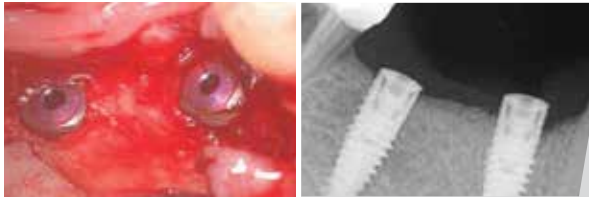
Exposed threads on  
a stable implant?  
OSSIX® VOLUMAX  
is your solution!



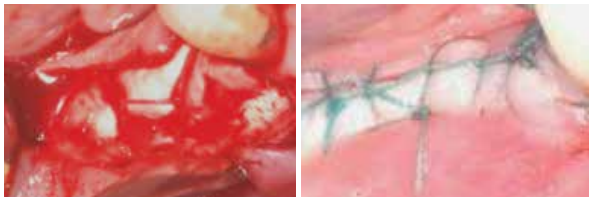
## Case Review

### Lateral and Vertical Augmentation

Missing buccal and crestal bone and severe periodontal attachment loss.



Before: Bone dehiscence

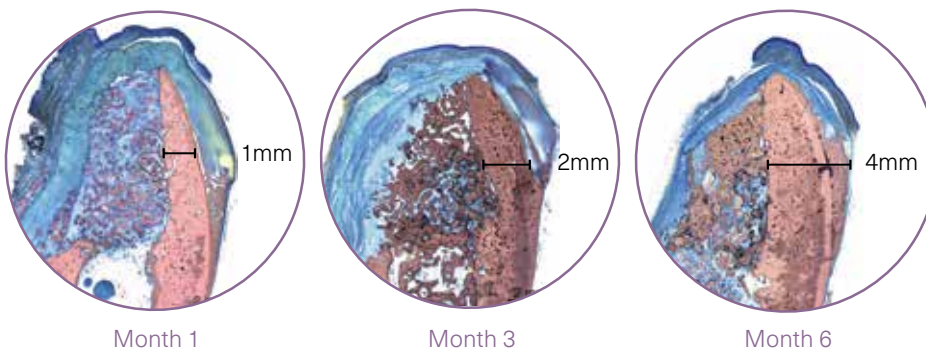


OSSIX® VOLUMAX  
fixation with periosteal sutures



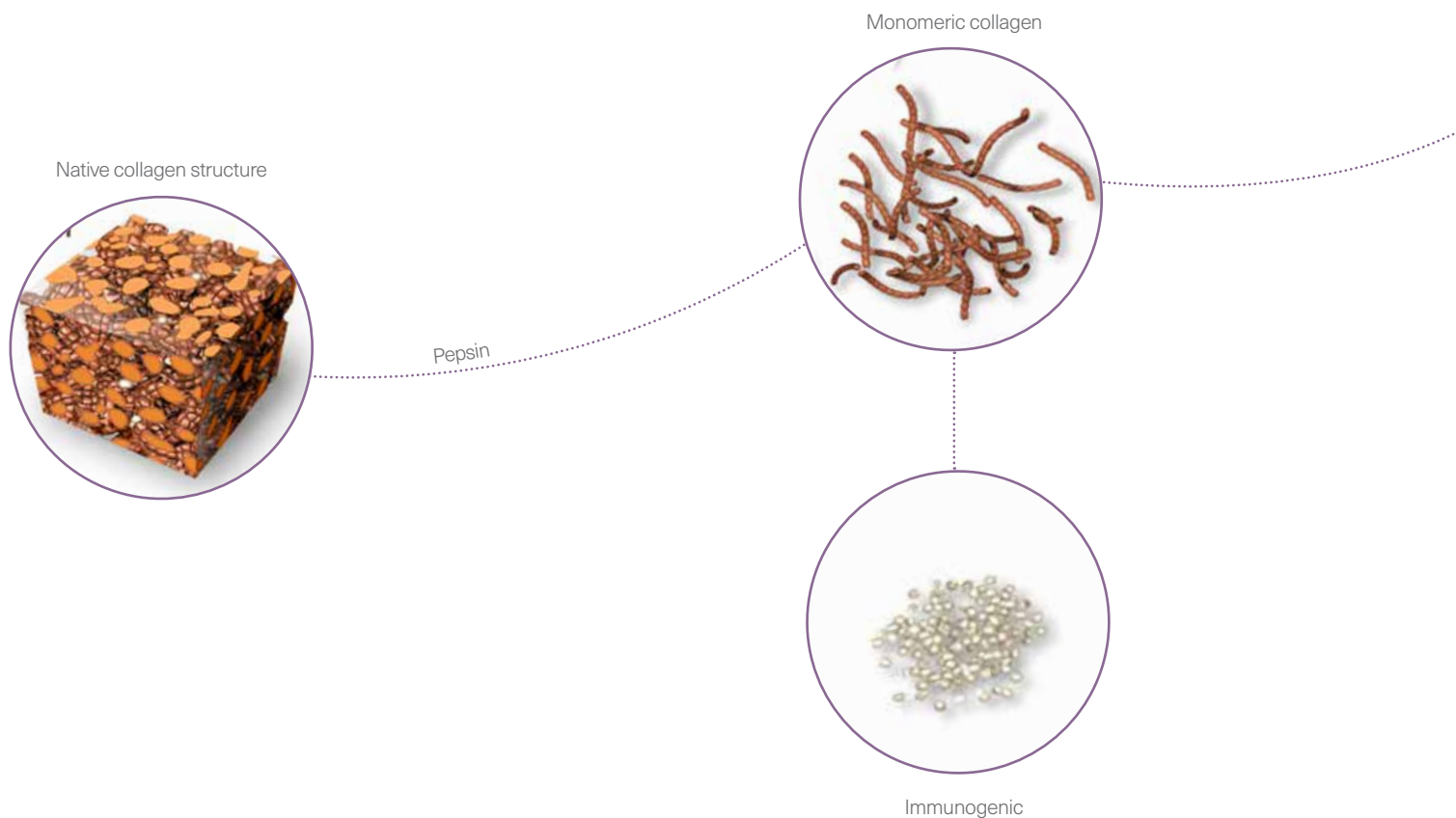
After 4 months: Vertical bone gain

Peer-reviewed evidence demonstrates that OSSIX® VOLUMAX provides equivalent ossification compared to standard bone void filler and membrane guided bone regeneration techniques.

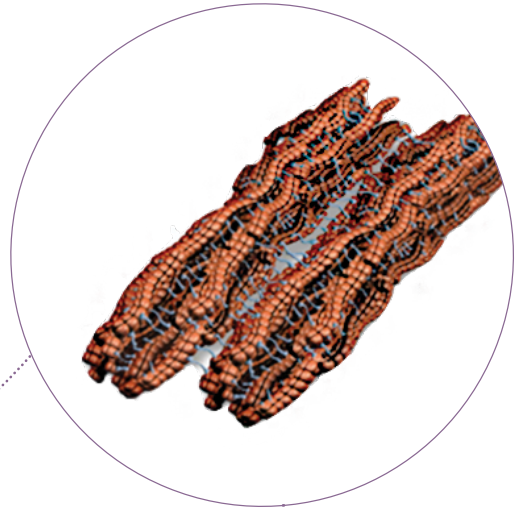


## OSSIX<sup>®</sup> PLUS, OSSIX<sup>®</sup> VOLUMAX, and OSSIX<sup>®</sup> BONE Cross-Linked Collagen GLYMATRIX<sup>™</sup> Process

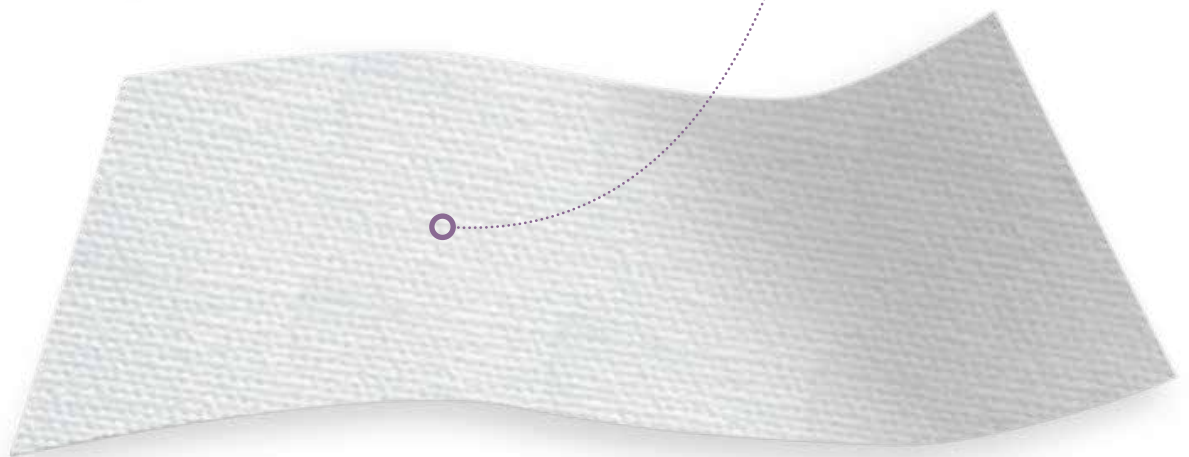
GLYMATRIX<sup>®</sup> is a proprietary collagen cross-linking technology utilized to create OSSIX<sup>®</sup> PLUS, OSSIX<sup>®</sup> VOLUMAX, and OSSIX<sup>®</sup> BONE. This process uses sugars to cross-link collagen molecules producing a collagen matrix. This resilient collagen matrix acts as a scaffold for rapid ossification.



Sugar-based cross-linked collagen matrix



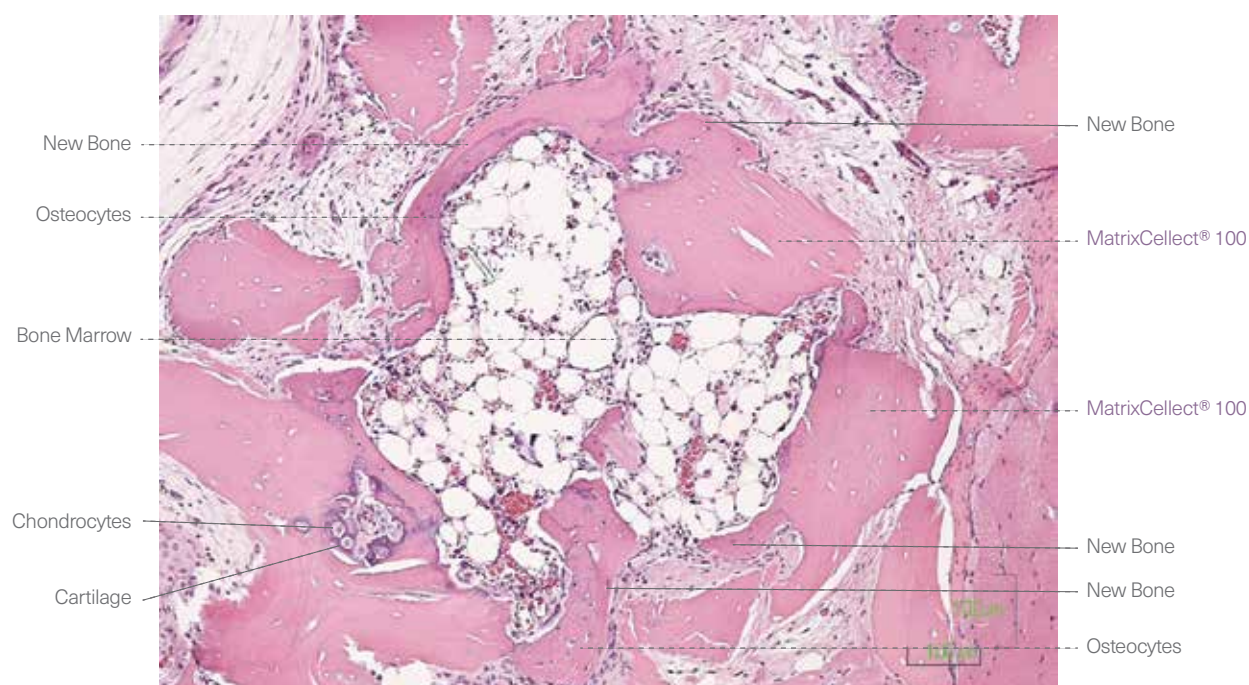
Reconstituted polymeric collagen



## CellRight's Osteoinductivity Verification Testing Explained

CellRight Technologies verifies every lot of all its demineralized bone matrix (DBM) products, post sterilization, for osteoinductivity. Furthermore, CellRight Technologies verifies that each lot, post-sterilization is osteoinductive as a condition of lot release for distribution. All osteoinductive testing is done by independent CLIA licensed laboratories, using validated and approved testing methods.

**In-vivo Test:** Each lot of MatrixCollect 100 DBM Putty and Crunch, Matrix OI Cortical Fibers, and ConCelltrate 100, post-sterilization, is implanted into an athymic rat for 28 days. Utilizing histological testing, a third party independent lab, verifies the presence of all 5 bone forming elements. The in-vivo test model is industry recognized as the gold standard for osteoinductivity testing.

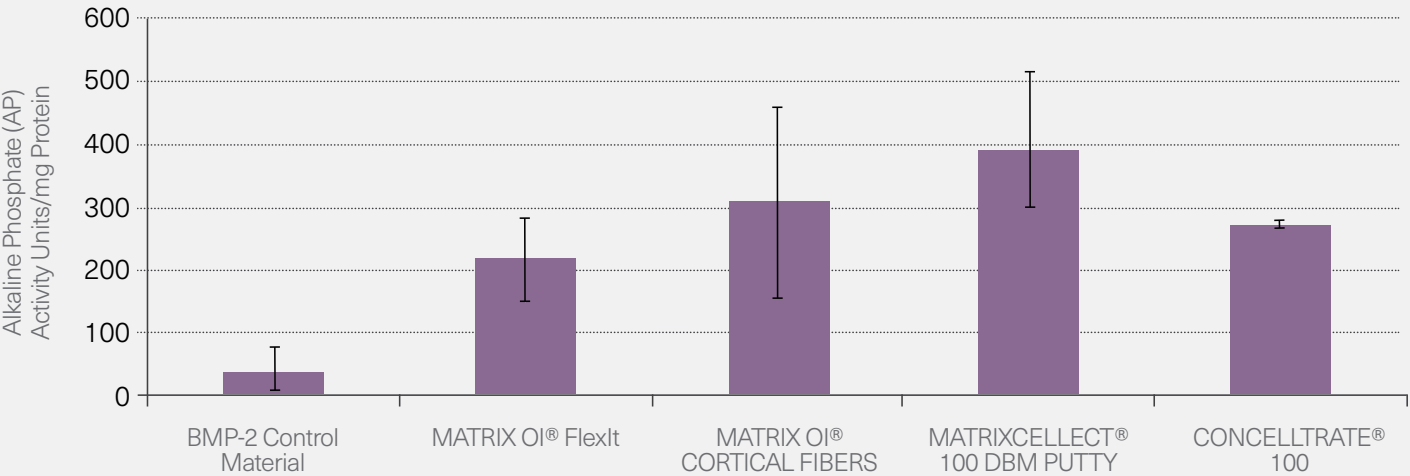



MatrixCollect 100 DBM Putty Histology

# In-Vitro Alkaline Phosphate (AP) Induction Assay Testing Results

(Synthetic BMP-2 Control Material vs CellRight Osteoinductive Products)

**In-vitro Test:** Each lot of MatrixCelect 100 DBM Putty and Crunch, MatrixOI FlexIt, MatrixOI Cortical Fibers, and ConCelltrate 100 is tested post-sterilization for alkaline phosphatase (AP) activity, which is an indicator of osteoblastic activity during human bone remodeling. All products are tested against a synthetic BMP control material's AP activity as a control.



 All the CellRight products mentioned have a seal on their final packaging that states, "Every Lot Verified Osteoinductive."





#### TERMS AND CONDITIONS OF SALE

The following are the terms and conditions under which MIS Inc. sells its products in North America.

Governing terms	Any shipment of products shall be deemed to be on the terms and conditions stated herein. Any and all terms and conditions submitted by Purchaser are hereby rejected. These terms cannot be varied by any oral promises, statements or representations.
Taxes	The prices set forth herein do not include any sales, use, excise, ad valorem, property or other taxes applicable to the sale, use or delivery of the products, all of which shall be paid by Purchaser separately or added to the contract price and paid by Purchaser to MIS.
Prices	The prices set forth for the products are in United States dollars. Prices may be modified without prior notice.
Delivery	Products sold hereunder shall be delivered F.O.B. manufacturer's plant or distributor's plant, as applicable. Purchaser shall assume responsibility for all subsequent delivery or shipping charges.
Payment	Payment terms shall be as set forth under the "Terms" section on front of invoice.
Warranty	MIS exercises great care and effort in maintaining the superior quality of its products. MIS makes no warranty, express or implied, except that all MIS products shall be free from defects in material and workmanship. This warranty applies only to the original Purchaser and is nontransferable. In event of a product defect, immediately notify MIS of the defect and prior to returning the product. Devices must be sterilized prior to return. As its sole obligation under this warranty, MIS will, at its option, deny liability resulting from the improper use of these products, whether used separately or in combination with other products.
Education: modification of products	Only appropriate healthcare professionals should use these products. MIS strongly recommends completion of formal postgraduate implant education and strict adherence to the procedures described in MIS's implant instruction manuals. MIS continually strives to improve its products and therefore reserves the right to improve, modify or discontinue products at any time, or to change specifications of the products without notice and without incurring any obligation.
Return policy	Purchaser may return any MIS products within 60 days of the invoice date. MIS products returned within 30 days of the invoice date will be accepted without a restocking fee to the Purchaser. MIS products returned between 31 and 60 days of the invoice date will be subject to a restocking fee. An MIS product will be accepted for return only if the MIS product is (1) returned in its original, unopened package (including autoclavable products); (2) received by MIS within 60 days after the invoice date for that product; and (3) returned freight prepaid accompanied by the MIS return authorization number provided by MIS's Customer Service Department. Purchaser should be advised that MIS products not meeting the above criteria will not be accepted for return.
Exchange policy	MIS products may be exchanged within 180 days of the invoice date, without a restocking fee, for other MIS products of equal or lesser value within the same product family as determined by MIS (example, implant for implant, abutment for abutment). MIS products may be exchanged within 180 days of the invoice date for other MIS products of greater value within the same product family as determined by MIS (example, implant for implant, abutment for abutment), with the price differential paid by the Purchaser, provided that the exchanged MIS products is (1) returned in its original, unopened package (including autoclavable products); (2) a currently offered MIS products (discontinued products not included); and (3) returned freight prepaid and accompanied by the MIS return authorization number provided by MIS's Customer Service Department.
Licenses, permits and export control	The timely securing of permits, licenses or other local, state or federal government approvals required in connection with Purchaser's use of any products hereunder shall be the sole responsibility of Purchaser and Purchaser shall bear the cost thereof. Unless otherwise agreed between MIS and Purchaser, products sold hereunder are for use only in the North America. Purchaser agrees that Purchaser will comply fully with all applicable state and federal laws and regulations and Purchaser shall indemnify MIS for all losses, damages and penalties incurred as a result of any violation of applicable state or federal law or regulations.
Force majeure or act of god	MIS shall not be liable for any loss or damage due for failure or delay arising out of any cause beyond the control of MIS. No such failure or delay shall be the basis for an increase in MIS's obligation or any termination by Purchaser.
Limitation of liability	Except for the warranty expressly described in the "warranty" paragraph above, neither MIS nor any of its affiliates makes any other warranty with respect to the MIS products, express or implied, written or oral, including, without limitation, any implied warranty of merchantability, or a warranty of fitness for a particular purpose. MIS shall not be liable for business interruption, loss of profits, special, indirect, incidental or consequential damages of any nature and from any cause whether based in contract, tort (including negligence) or other legal theory, even if MIS has been advised of the possibility of such damages.
Validity	If any provision of these Terms and Conditions is found to be illegal or unenforceable in any respect, such illegality or unenforceability shall not affect any other provision of these Terms and Conditions, all of which shall remain enforceable in accordance with their terms.
General provisions	The purchase of the products and these Terms and Conditions are governed by the laws of the state of New Jersey exclusive of its conflicts of law principles. This document incorporates all oral and written representations between the parties and constitutes the entire agreement and understanding of the parties with respect to the subject matter hereof and supercedes any and all other agreements either oral or written between the parties with respect to such subject matter. No amendment or modification may be made to this document unless in writing and duly executed by an authorized representative of MIS. Purchaser consents to jurisdiction and venue in the Superior Court of New Jersey for Bergen County and waives the right to trial by jury.
Caution	Federal (U.S.) law restricts these devices to sale by or on the order of a licensed healthcare practitioner. Devices labeled "STERILE" are certified to be sterile unless package is opened or damaged.

#### Customer Service

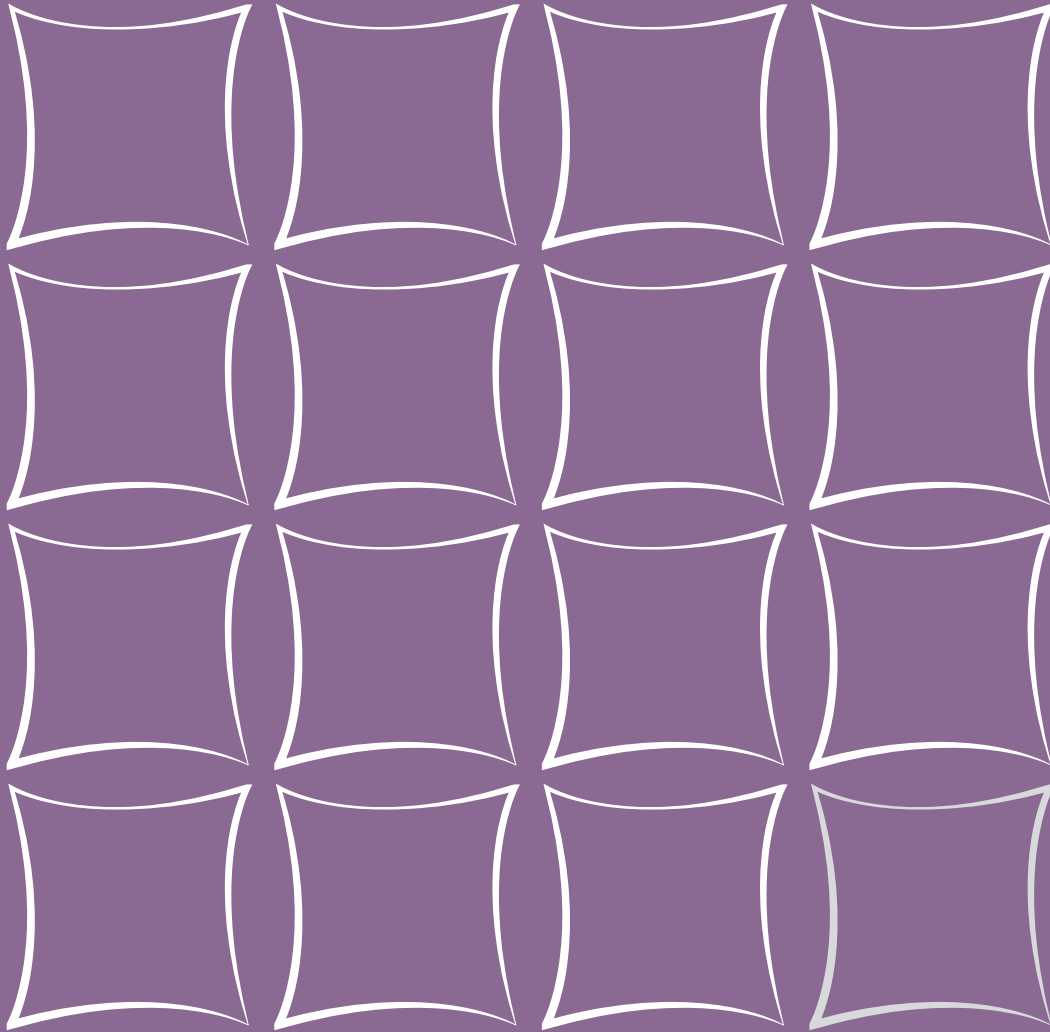
Monday – Friday, 8:30 – 8:00 Eastern Time

Toll Free 1-(866) 797 1333

service@misimplants.com

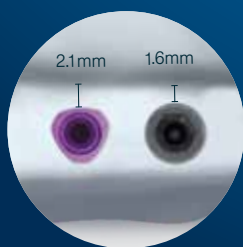
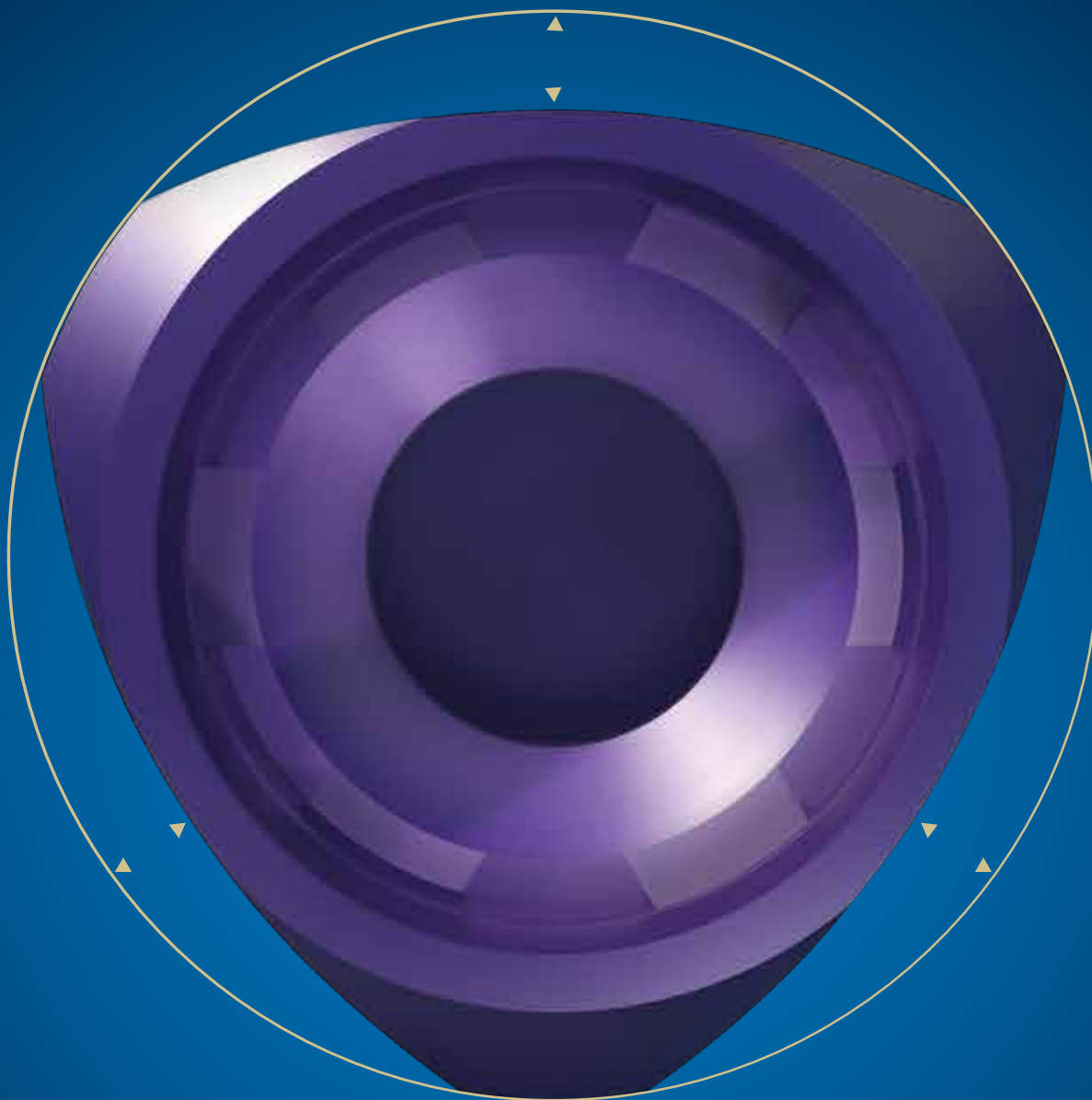
misimplants.com





**mis<sup>®</sup>**

All rights reserved. No part of this publication may be reproduced, transcribed, stored in an electronic retrieval system, translated into any language or computer language, or be transmitted in any form whatsoever, without the prior written consent of the publisher.



THE NEW IMPLANT SOLUTION FOR  
DEFICIENT ARCHES. **MAKE IT SIMPLE**

The V3 Implant's triangular neck is designed for more bone, without compromise.  
Visit our website: [www.misimplants.com](http://www.misimplants.com) or call us: 866-797-1333 (toll free)

**mis® | v3**