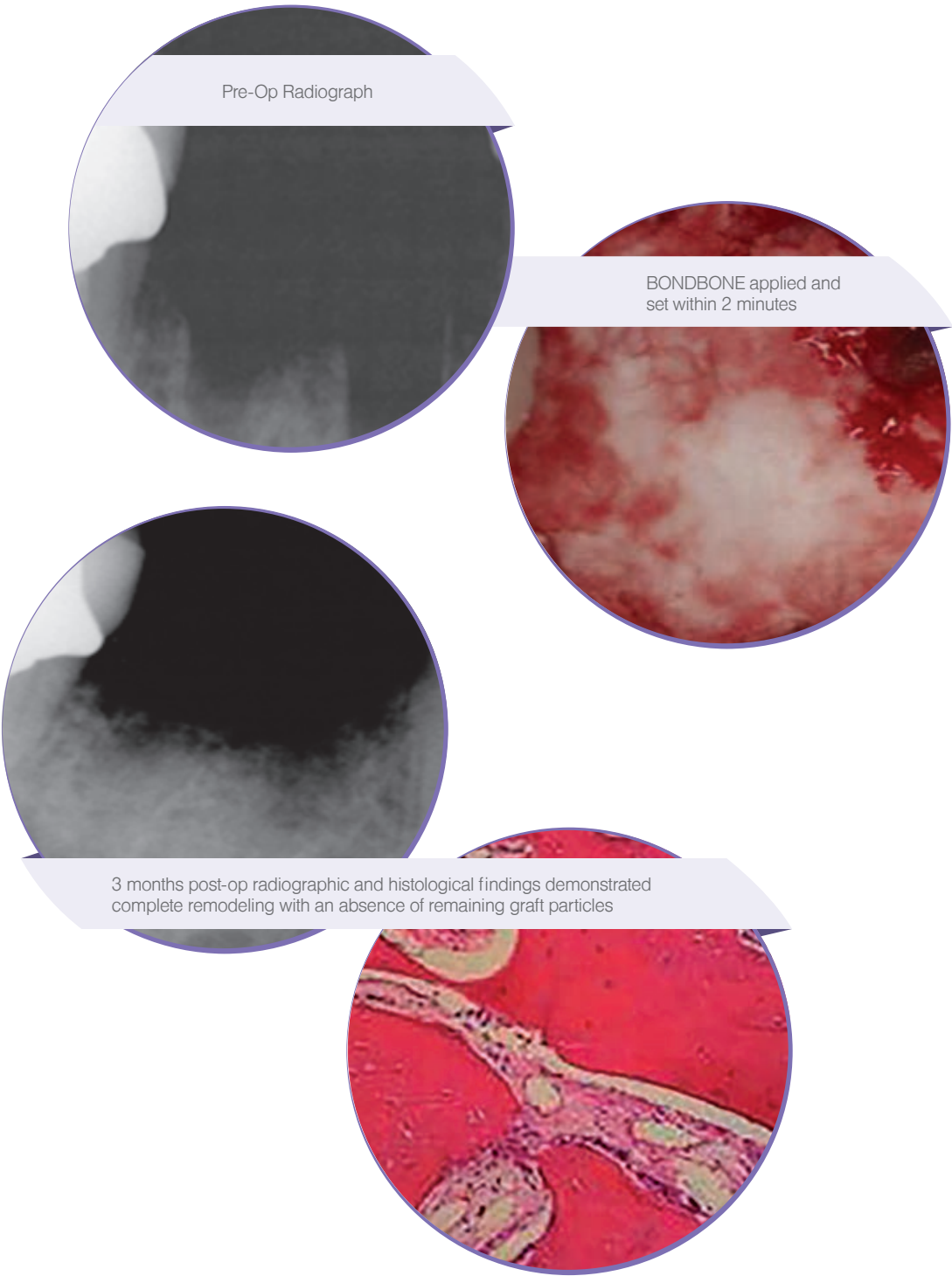


Case Review

Proven to ossify and fully resorb in 3-4 months



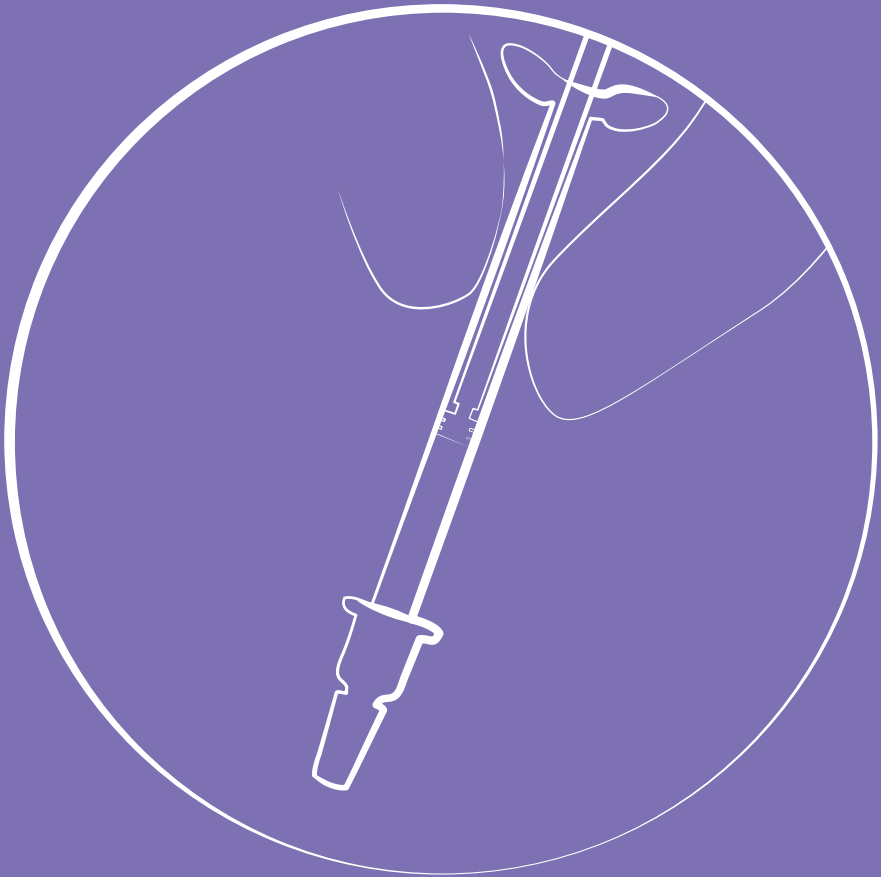
Ziv Mazor, DMD; Michael D. Rohrer, DDS, MS; Hari S. Prasad, BS,MDT; Nick Tovar, PhD; Robert A. Horowitz, DDS.
39-year-old woman with failed mandibular right first molar under a fixed PFM prosthesis

mis | MAKE IT SIMPLE
www.mis-implants.com

The MIS Quality System complies with international quality standards: ISO 13485: 2016- Quality Management System for Medical Devices, ISO 9001: 2008 - Quality Management System and Medical Device Directive 93/42/EEC. MIS products are CE marked. Please note, not all products are registered or available in every country/region.

MIS BONDSE Bond

© MIS Implants Technologies Ltd. All rights reserved.



BONDBONE®
Bonding Graft Material

mis®

Bone Grafting Made Simple

BONDBONE® is a novel synthetic bone grafting material, considered to be a breakthrough in the field of dental bone augmentation.

BONDBONE® features and benefits



Composed of Biphasic Calcium Sulfate-An established and widely documented synthetic graft material



Biocompatibility, osteoconductivity and resorbability



Capable of being mixed with bone-filling products to create a composite graft solution



Consistent, fast setting and not effected by blood or saliva



Packaging

BS-BB005 - BONDBONE 0.5cc, 3 Drivers
BS-BB010 - BONDBONE 1cc, 3 Drivers



BONDBONE Drivers (3x)

Sterile 1cc Syringe and Needles (3x)

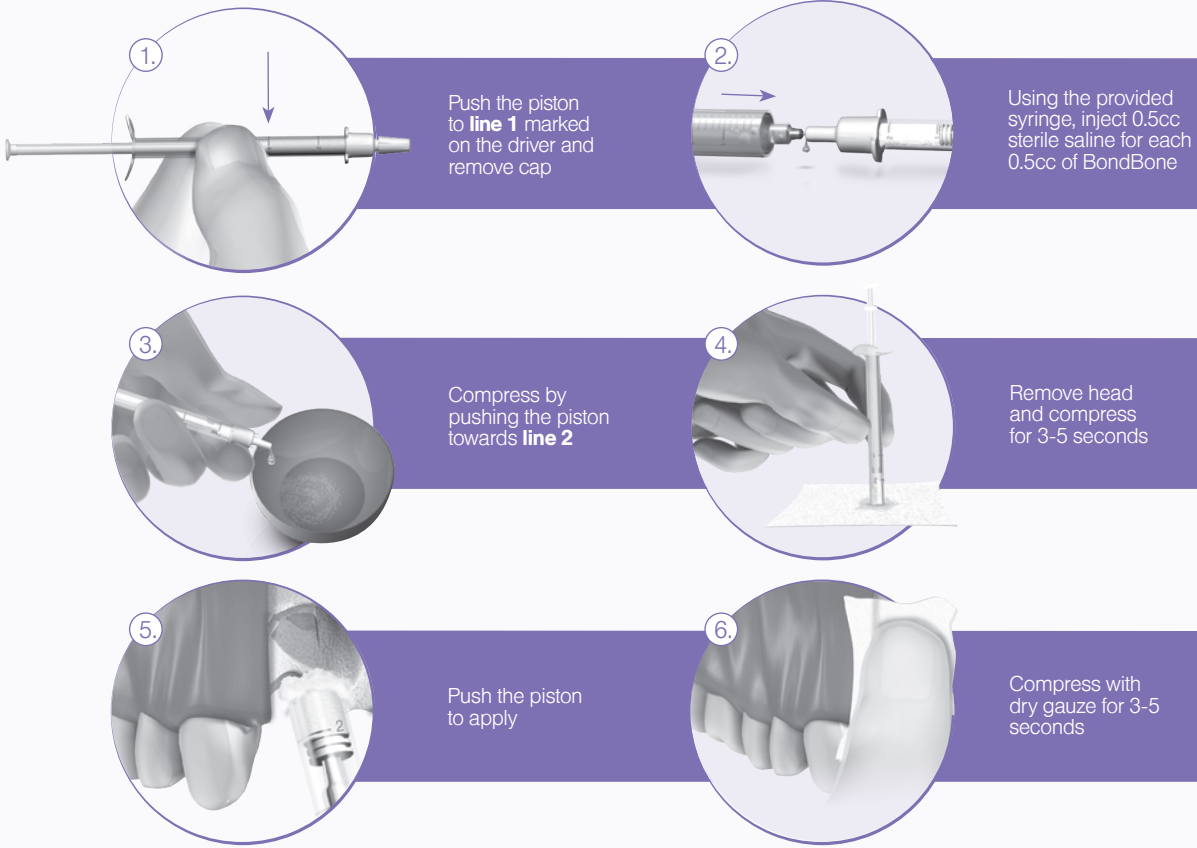
BONDBONE® Packaging offered in sets of three 0.5cc or 1.0cc units

Procedures & Applications

APPLICATIONS WHEN USED ON ITS OWN:

4 Wall Extraction Sockets • 3 Wall Extraction Sockets with a Defect Less than 10mm • After Immediate Implant Placement where Threads are Exposed • Periodontal Defects • Other Small Bony Defects

Procedure:



APPLICATIONS WHEN USED AS A COMPOSITE:

Extraction Sockets with a Defect Less than 10mm • Large Buccal Wall Defects • Sinus Lifts

