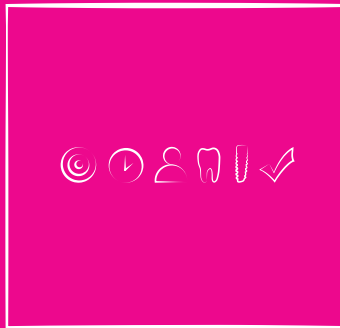




Orthodontic
Anchor Screw



MIS Warranty: MIS exercises great care and effort in maintaining the superior quality of its products. All MIS products are guaranteed to be free from defects in material and workmanship. However, should a customer find fault with any MIS product after using it according to the directions, the defective product will be replaced.

4. ■

Overview.

5-6. ■

Link, Orthodontic anchor screw.

7. ■

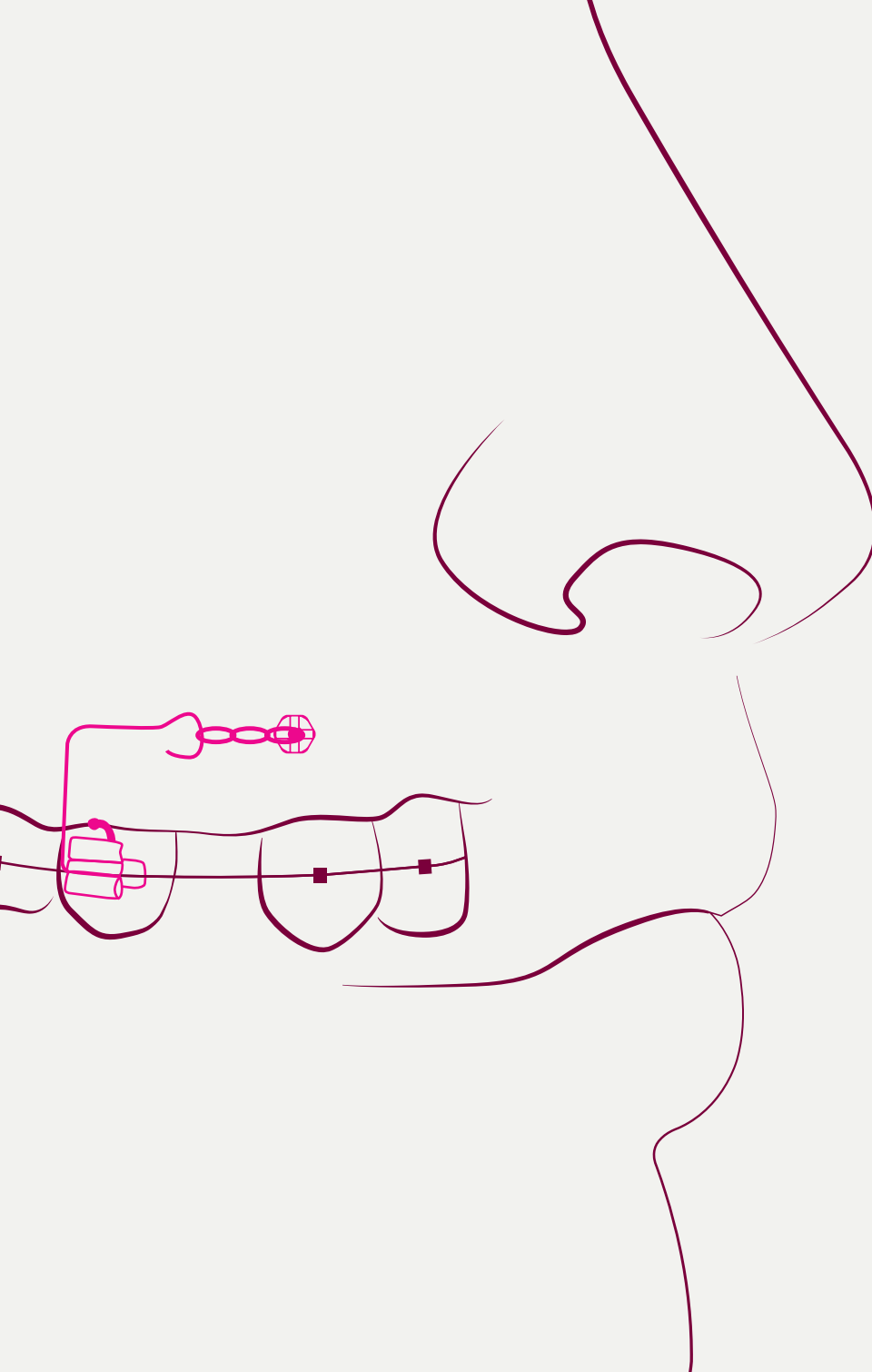
Advantages.

8. ■

Insertion.

9. ■

Tools.

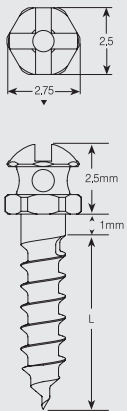


4.

A revolutionary ortho anchor system
for improving anchorage and efficiently
facilitating better results.



Link Ø1.60mm
Standard screw range.

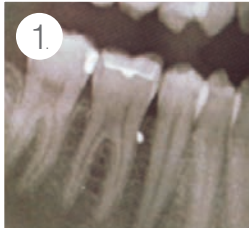
Catalog No.	Dimensions	Material	Description
MG2-06160	Ø1.60mm length 6mm	Titanium Alloy Ti-6Al-4V ELI	
MG2-08160	Ø1.60mm length 8mm		
MG2-10160	Ø1.60mm length 10mm		
MG2-12160	Ø1.60mm length 12mm		

Link your success to our revolutionary orthodontic anchor system

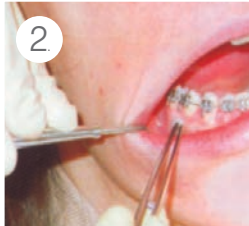


Final result

Easy application of orthodontic anchor screws in four steps:



Diagnostic radiograph



Positioning



Insertion



Immediate application

Advantages.

Self drilling for simple and drill-free insertion ■
Made of titanium alloy - a fully biocompatible material ■ Has an outer hexagonal head ■
Small dimensions allow insertion in various locations ■ Incisions and flaps are not necessary ■ Immediate loading ■ Simple and convenient anchorage ■ Easy removal ■
A revolutionary system for improving anchorage and efficiently.

Instructions for use

- Identify the location, position and angulations of adjacent roots.
- Select appropriate Orthodontic Screw.
- Use local anesthetic on both buccal and lingual sides.
- Attach a Driver Shaft to an Ortho Screwdriver or to an electric hand-piece.
- Remove a LINK screw from its package and connect it to the Driver Shaft.
- Based on the preliminary plan, insert screw to desired location.

* Electric hand-piece must not exceed 30RPM.

* Recommended insertion torque (using hex. Key)=25 Ncm.

* Recommended insertion torque (using cross head Key)=22 Ncm.

8.

MIS - MAKE IT SIMPLE.

With only a few specifically positioned anchoring screws, creative orthodontic and orthopaedic solutions can be achieved.



Simple
Self drilling insertion.



Safe
All screws are made of titanium alloy (Ti-6Al-4V ELI), the globally successful, safe and biocompatible proven material.



Quick
The screws can usually be loaded immediately after insertion.

Stable fixation even for major demands in segment treatments.



Anterior teeth intrusion



Molar intrusion



Molar protraction

Tools.

The specially engineered tools allow simple, smooth and quick insertion or removal of all standard Link orthodontic anchor screws. Insertion or removal can be done safely and effectively either by hand or by a motor drive (see IFU).

**MT-TDO01**

Ortho anchor pilot drill 1mm

**MT-SCD20**

Short cross driver for orthodontic screws

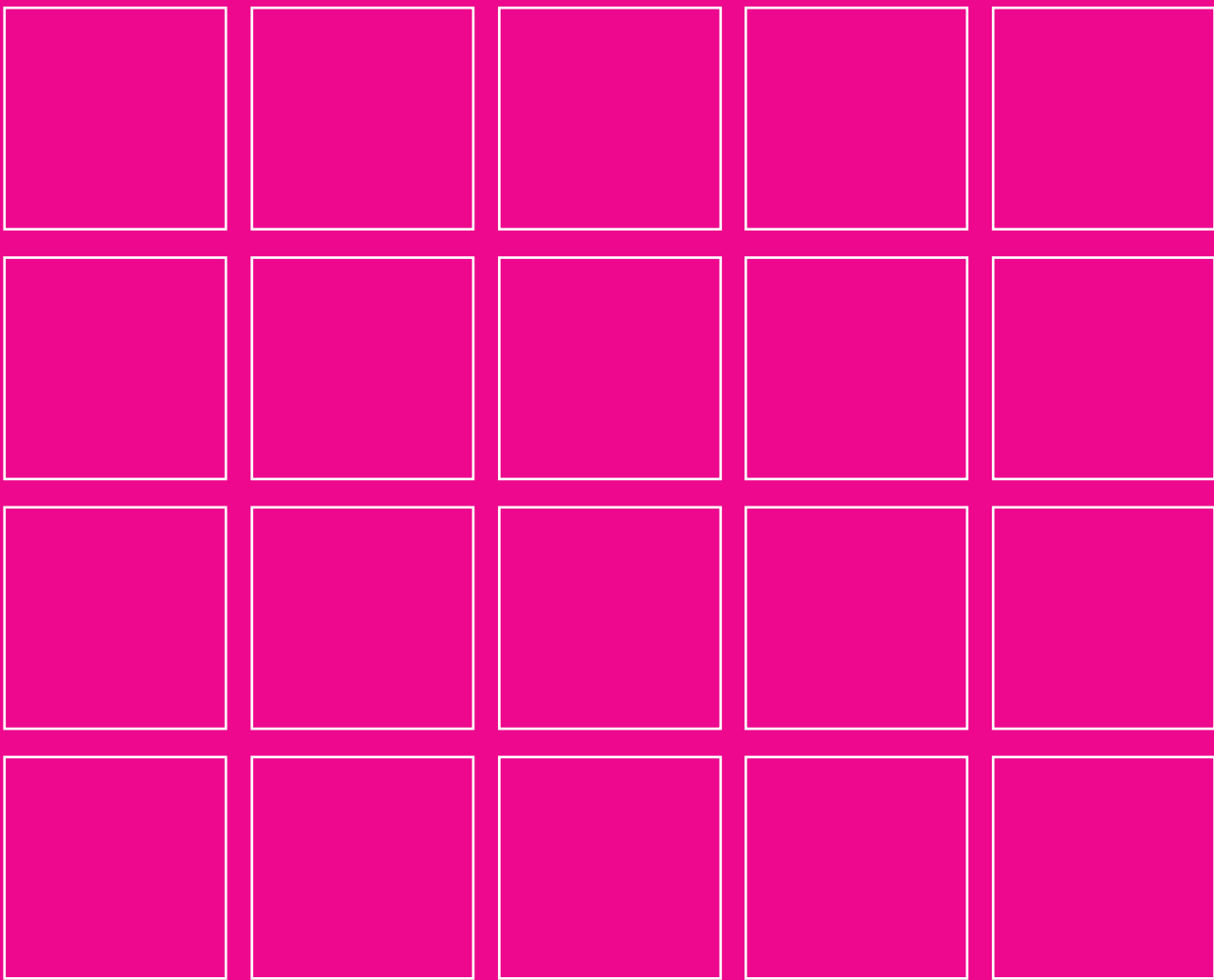
**MT-LCD20**

Long cross driver for orthodontic screws

**MT-MSD20**

Surgical adapter driver









www.mis-implants.com

MIS' Quality System complies with international quality standards: ISO 13485:2003 - Quality Management System for Medical Devices, ISO 9001:2008 - Quality Management System and CE Directive for Medical Devices 9342//EEC. MIS' products are cleared for marketing in the USA and are CE approved.