

Let us bring the magic
of your smile back.

WE MAKE IMPLANTS
SIMPLE.

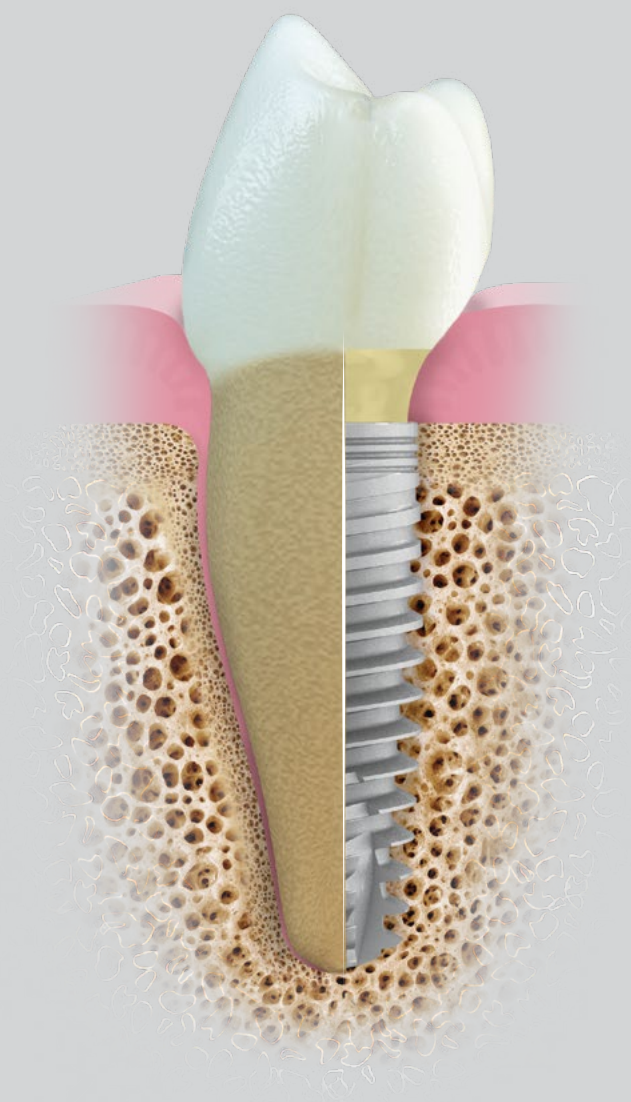


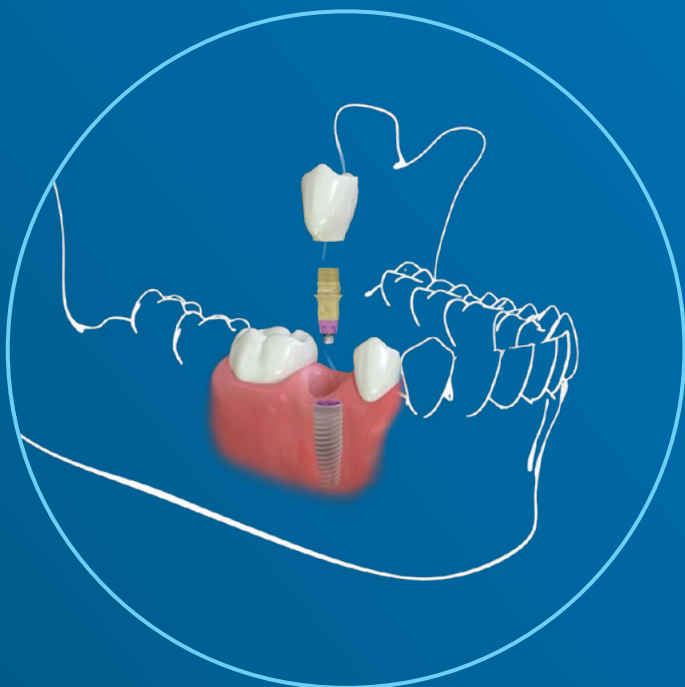
MIS[®]

What are dental implants?

Dental implants replace missing roots, and can support dental restorations that look and feel just like your own. You will be able to eat and drink whatever you like without the inconveniences of removable dentures, partials or missing teeth.

On the other hand, in cases where no implant is placed, bone resorption may lead to ill-fitting dentures which don't provide a comfortable or effective solution for the patient.





1.

How are dental implants used to replace a **single tooth**?

If you need to replace just one tooth, an implant may be a more effective alternative to traditional bridge work.

A standard bridge requires cutting down adjacent teeth to support it. The supporting teeth become more susceptible to caries, and may eventually be lost too.

A dental implant not only preserves bone and gum tissues but also avoids cutting down neighboring teeth, allowing their longer and healthier life span.

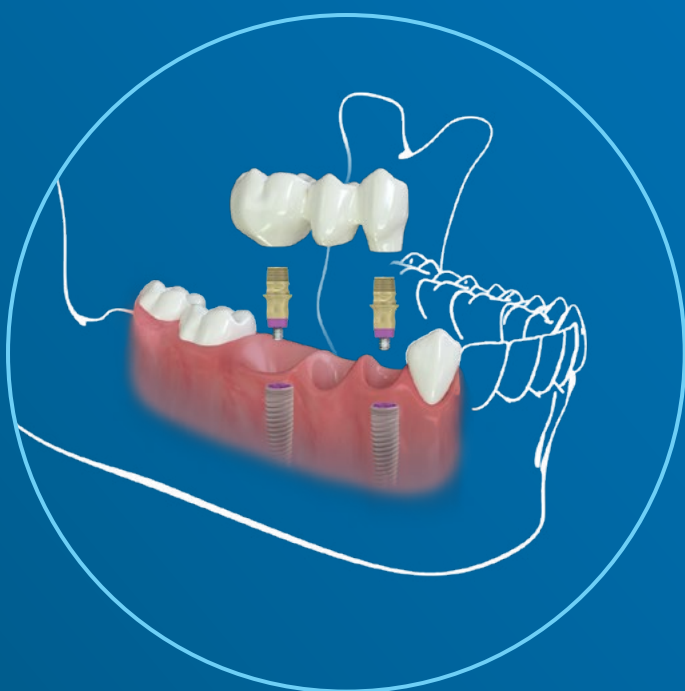
2.

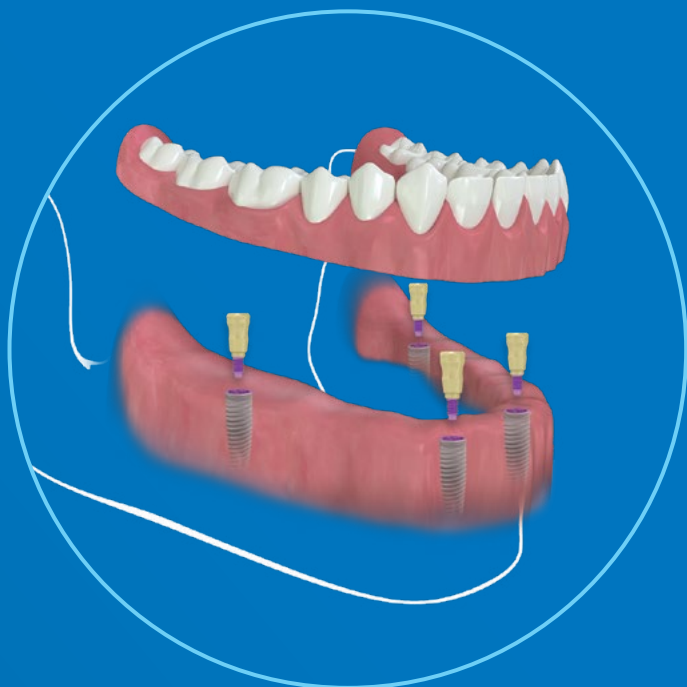
How are dental implants used to replace **multiple teeth with a fixed bridge**?

When a few adjacent teeth are missing or badly damaged, multiple dental implants may be placed to support a dental bridge.

This advantageous alternative avoids the hassle involved with the use of partial removable dentures. It makes the use of metallic clasps unnecessary, resulting in better esthetics, and causes no harm to adjacent teeth.

The result is a more convenient, fixed, esthetic solution that enhances quality of life while keeping your teeth healthy.





3.

How are dental implants used for a removable restoration of a **completely edentulous jaw**?

Patients with a completely edentulous jaw can now avoid the hassle of removable dentures by using fully removable overdentures.

Supported by four or more implants, the overdenture will provide a simple and retentive solution for those who wish to improve their chewing ability and enjoy a better quality of life.

What are some of the technological advances in this field and how do they benefit my implant placement?

Guided surgery provides the dentist with a custom, pre-planned digital 3D surgical template which guides the doctor during implant placement surgery to the desired drilling angle and depth.

Having everything digitally-planned ahead of surgery makes it possible to produce a provisional restoration which lets you leave the doctor's office with a full smile immediately after implant placement. This saves you time in the dentist's office and makes the procedure more accurate, safe, and convenient.

How long is the procedure, from start to finish?

Implant placement is usually a relatively short procedure, done under local anesthesia. Immediately after implant placement is performed, the bonding (osseointegration) of implant to bone begins, and healing takes place. This takes approximately 6-8 weeks. Once this process is complete, fitting for prosthetic restoration may begin. The entire procedure may take as little as 6 months or up to 1 year.

In cases where the patient is a suitable candidate for immediate loading procedures, placing an implant and fitting it with a temporary restoration may even be done during the same visit.

How do I take care of my implants after they are placed?

It is very important to maintain good hygiene after implant placement. This should include taking care of your gums as well. Healthy gums and mouth environment promote healing and a stronger bond between placed implant and surrounding bone.

Ask your dentist about best-practices for maintaining good health of your implants and surrounding gums and teeth.

Are there any risks involved?

Dentists have been placing implants for well over half a century. There have been great strides in the field, ensuring predictability, patient comfort and safety, as well as a successful outcome, including getting back that smile you might have lost.

As with any surgical procedure, health risks exist, yet are specific to each patient, their medical background and the complexity of the procedure that was chosen.

It is always necessary to provide your doctor with a complete medical history and consider any other lifestyle or hygiene issues which may affect the treatment.

Why choose MIS implants?

MIS offers a complete range of dental implant solutions for every indication. Our implants and superstructures are manufactured and packaged in accordance with the most stringent international standards.

We invest much time and effort into ensuring the purity and cleanliness of our products in order to enable maximum success and comfort for the patient.



MIS XD: NEW. SHARP. EVERY SINGLE TIME.

Every package of MIS Implants comes with patient-specific, single-use drills, for optimal safety and hygiene.

Sharp and sterile drills reduce the possibility of cross-contamination and infection.

Ask Your Doctor about MIS XD!



Please contact your dentist for more information, or any concerns regarding your case and procedure.